

Surface-mounted luminaire - Micro-prismatic diffuser - direct distribution / indirect distribution for ceiling lighting - homogeneous light output through LED edge light injection

Ultra-flat luminaire housing, extruded aluminium profile, naturally anodised, visible installation height 30 mm; end faces and side parts made of naturally anodised aluminium with continuous longitudinal groove, rounded towards the bottom of the luminaire. Housing colour natural anodised aluminum; Direct/indirect light distribution, direct portion by means of a microprism made of PMMA, homogeneous light emission through lateral LED light coupling and fitted aluminium reflector in a highly reflective white coating, with micro-perforation for a moderate ceiling illumination; for computer screen workstations, omnidirectional glare suppression according to the current norm DIN-EN 12464-1. Integrated LED driver design.. Wired ready for connection via integrated transparent connection cable 9x0.75mm<sup>2</sup>, stripped cable ends. Light Control: netlife easyM5S5; Regiolux Classification: netlife easy; Control signal: DALI broadcast; Number of control gear (max): 32; Communication: Wired; Sensor technology: PIR - passive infrared; Installation height (min/max): 2m to 5m; Monitoring area: max. D=7m; Remote control: 84501041200; Optional remote control: 84501042100; Application: Office, Secondary rooms, Meeting rooms, Classrooms, Corridors; Function: Motion detection, presence detection, Daylight control, Manual dimming, Corridor function. Ceiling mounting brackets for simple clip assembly are included in the scope of delivery. Remote control for the commissioning and/or operation of the DALIeco (M5S5) light control system must be ordered separately.

## CHARACTERISTICS

Order number	43351028175
EAN number	4020863315710
Commodity code	94051190
Certification mark	IP 20, Protection class I, VDU 65° < 3000, F, Indoor, CE
Impact resistance (IK rating)	IK03
Ambient temperatur	ta 25°C
Warranty period	5 years

## ELECTRICAL ENGINEERING

Controller	Electronic driver M5S5 DALI (1 pcs.)
System output	55W
Mains voltage	230V/50Hz
Circuit breakers (inrush current)	13 pieces/B10, 24 pieces/B16, 25 pieces/C10, 40 pieces/C16
Energy efficiency class/light source	C

## LIGHTING TECHNOLOGY

Placement	LED, Colour rendering/Light colour CRI ≥ 80 / 4000K
Colour tolerance (MacAdam)	3SDCM
Nominal luminous flux	6295lm
LED service life	50000h L80/B10 (Tq 25°C)
Luminaire luminous efficiency	115lm/W
UGR lat./long.	18.2 / 18.3

## MECHANICS

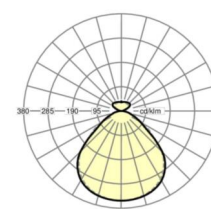
Housing colour	natural anodised aluminum
Dimensions (LxWxH/DxH)	1480mm x 330mm x 42mm
Weight (net)	9.1kg
Cable entry KE (X/Y)	0mm/0mm
Type of installation	Ceiling-mounted single installation

## Dimensions

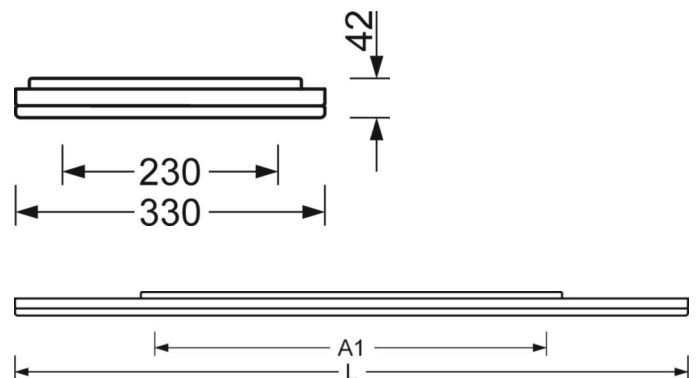
L	1480 mm	Length
B	330 mm	Width
H	42 mm	Height
A1	700 mm	Mounting distance single mounting
A4	230 mm	Mounting distance (width)
X	0 mm	Distance cable infixed to the center of the luminaire on the X-axis
Y	0 mm	Distance cable infixed to the center of the luminaire on the Y-axis

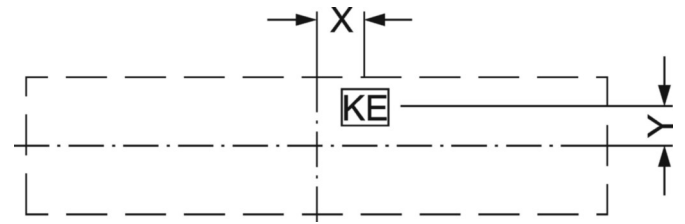
## DEEP-LINK

<https://www.regiolux.de/en/article/43351028175>



Reference	LED 6300lm 840
ηLB	100 %
Φ ↓/↑	84 % / 16 %
UGR lat./long.	18.2 / 18.3
VDU	65° < 3000cd/m <sup>2</sup>

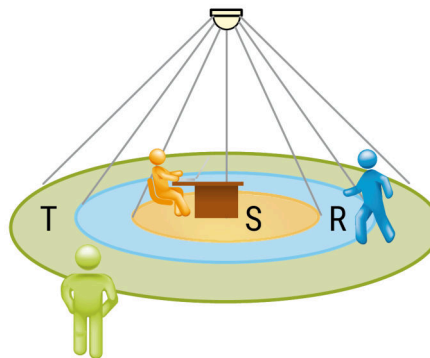




## LC SYSTEM

### CHARACTERISTICS

Regiolux Classification	netlife easy
Control signal	DALI broadcast
Number of control gear (max)	32
Communication	Wired
Sensor technology	PIR - passive infrared
Installation height (min/max)	2m to 5m
Remote control	84501041200
Optional remote control	84501042100
Application	Office, Secondary rooms, Meeting rooms, Classrooms, Corridors
Function	Motion detection, presence detection, Daylight control, Manual dimming, Corridor function



### MONITORING AREA

Mounting Height	2,5m	3,5m	5m
Ø max. sitting[S]	3,3m	5m	-
Ø max. radial[R]	5,3m	7m	7m
Ø max. tangential[T]	-	-	-

